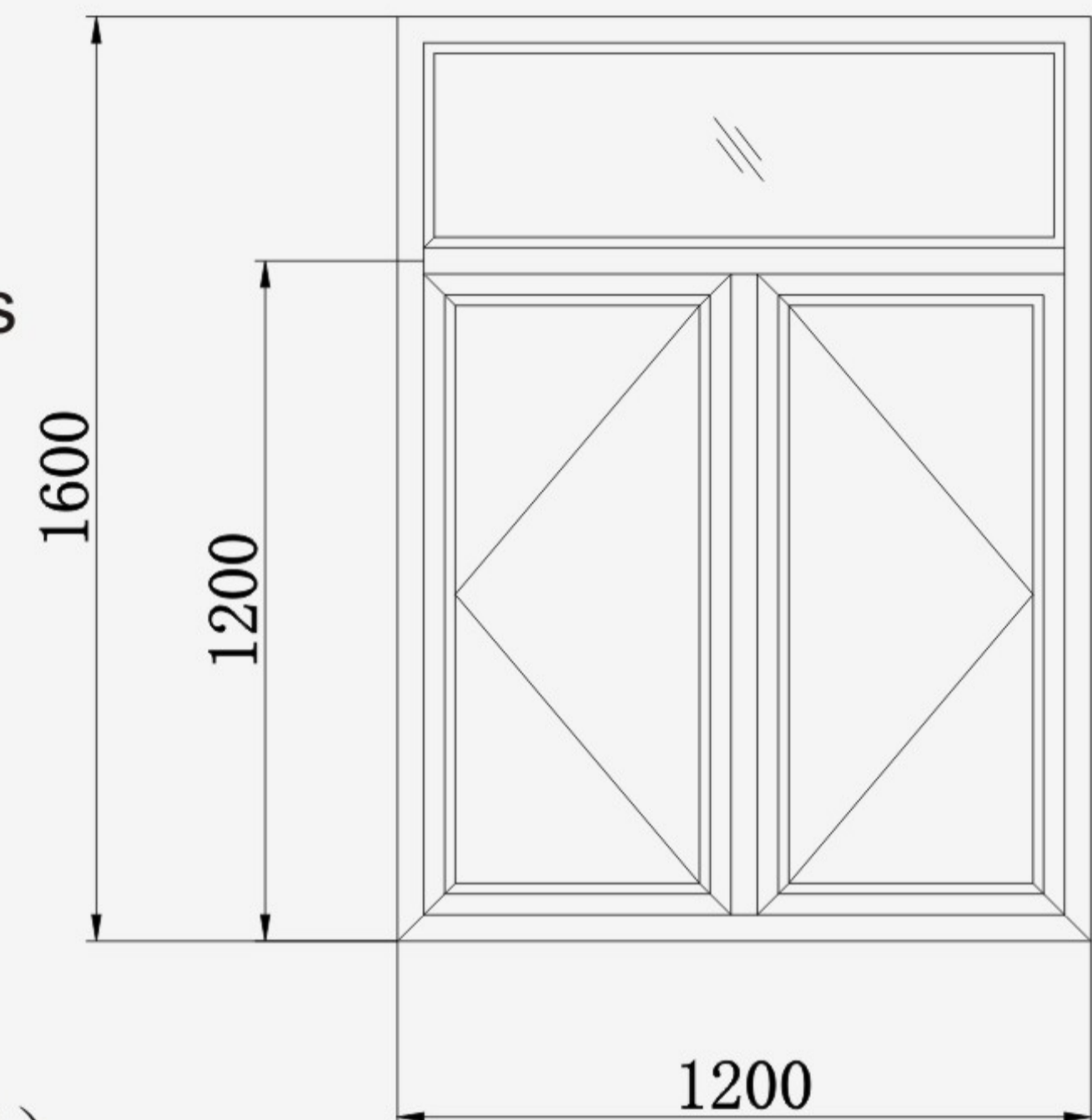




GUANG YA

GRPK55 Series Insulated Energy-saving Outward Casement Window

Product: GRPK55 Series outward casement window
 Profile type: Heat-insulated aluminum section with strips
 Frame width: 55mm
 Glazing option: 20~33mm
 Opening style: Outward opened
 Profile thickness: 1.4mm
 Consumption of aluminum profile: 10.44kg/m²



Product performance (in accordance with GB/T 8478 - 2008)

1. Wind loading resistance: Grade 8 - $4500 \leq P_3 < 5000 P_a$
2. Air tightness: Grade 7 - $1.0 \geq q_1 > 0.5 m^3 / (m.h)$
3. Water proof: Grade 6 - $\Delta p \geq 700 P_a$

Product features:

1. Good effect of heat-insulation, heat-preservation sealing effect and excellent performance of air-tight and waterproof.
2. The frame of the outward window is designed with a large groove to fit dedicated window hinge.
3. The limit of inward window is avoided, like taking up indoor space when opening, causing trouble in hanging curtains, installing liftable rails or children knocks, etc.
4. High-grade and elegant.

Accessories provided by Guangya:

Item	Price *
Friction Hinge	¥ 12- ¥ 20/ pc
Two-bore Lock	¥ 40- ¥ 200/ set
Sealant	¥ 2- ¥ 5/ meter
Weather Strip	¥ 0.2- ¥ 0.5/ pc
Silicone Sealant	¥ 10- ¥ 15/ pc

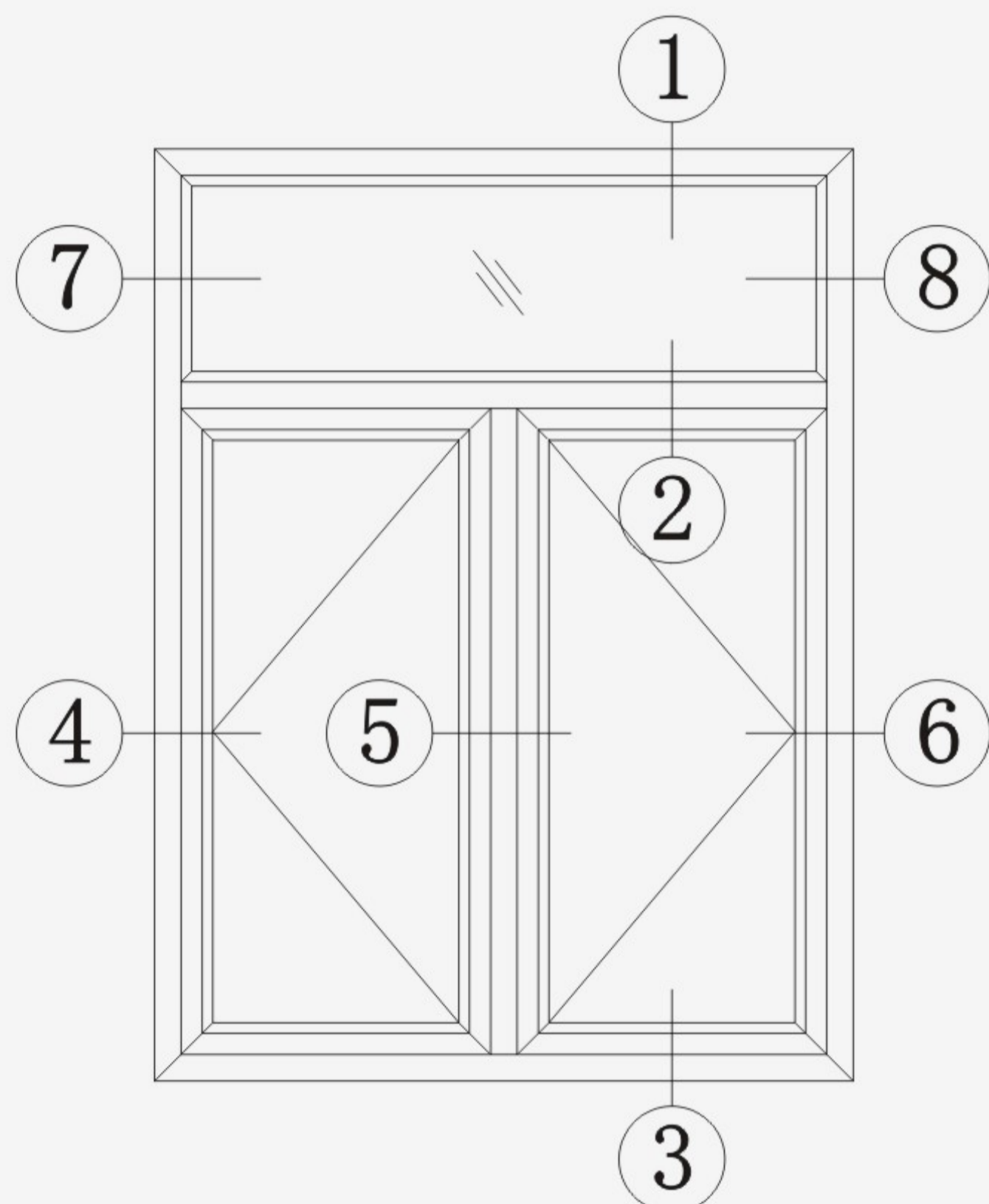
* For reference only,subject to further change.



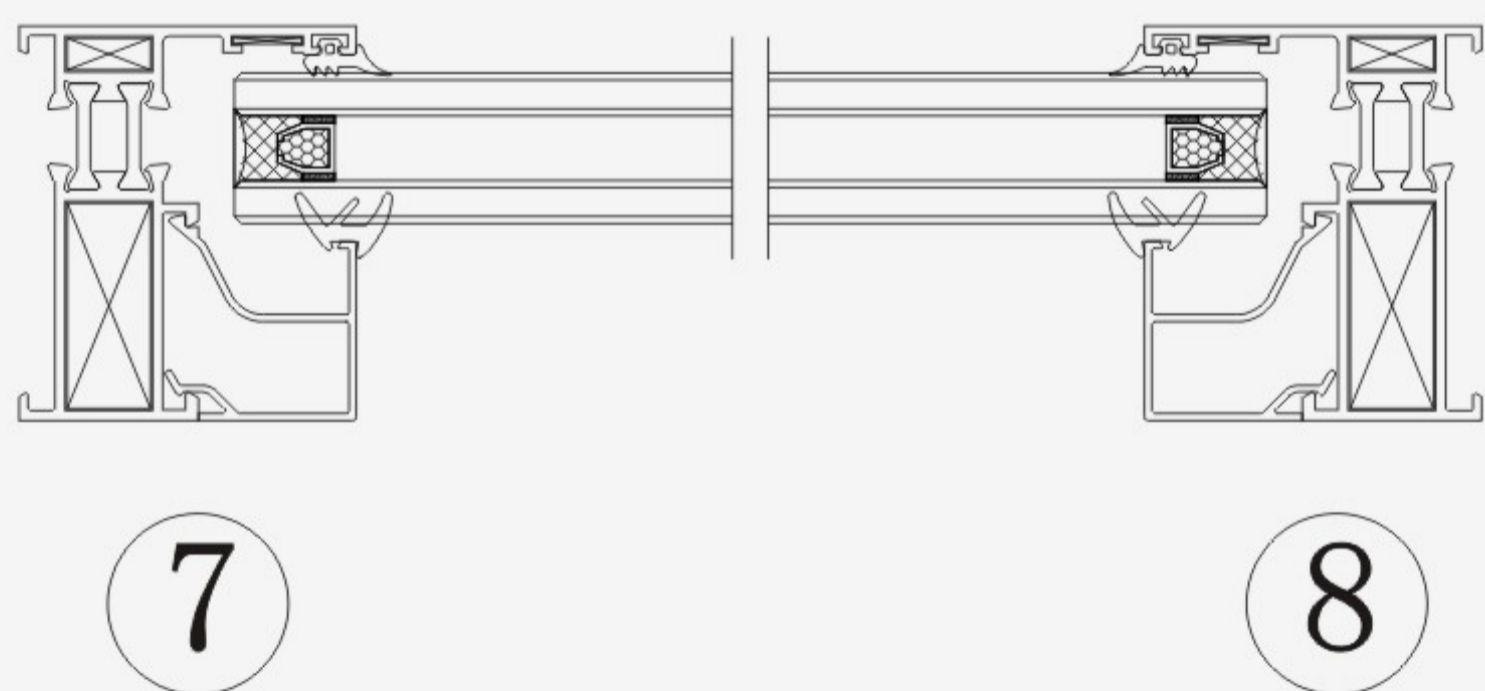
GRPK55 Series Insulated Energy-saving Outward Casement Window

GUANG YA

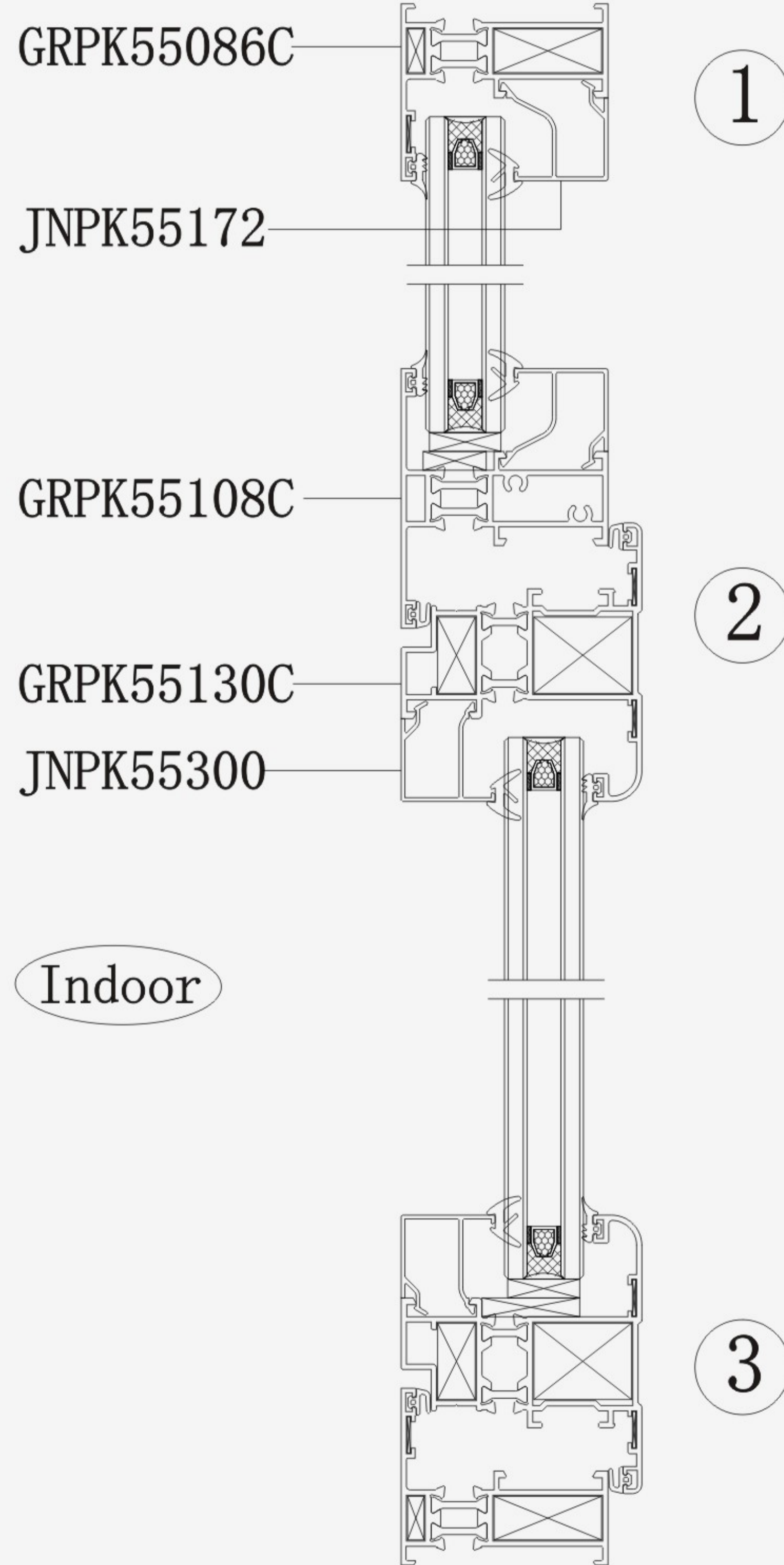
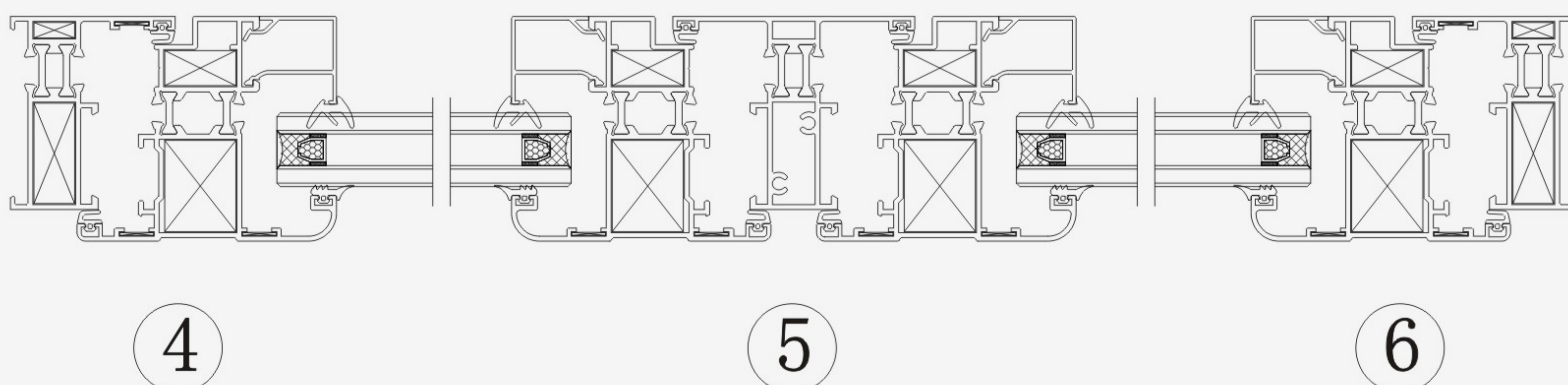
GRPK55 Series Insulated Energy-saving Outward Casement Window



Indoor



Indoor



Indoor



GRP55 Series Insulated Energy-saving Outward Casement Window

GUANG YA

Application	Frame	Application	Bead For Sash	Application	Mullion
DWG No.	GRP55086C	DWG No.	JNPK55300	DWG No.	GRP55108C
Thickness	$\delta = 1.4$	Thickness	$\delta = 1.0$	Thickness	$\delta = 1.4$
T.W.	0.969kg/m	T.W.	0.235kg/m	T.W.	1.151kg/m
* Matching Angle Is 5015.		* Assembled For GRP55130C, Glazed For 26mm.			
Application	Bead For Sash	Application	Out-opening Sash	Application	Bead For Sash
DWG No.	JNPK55101	DWG No.	GRP55130C	DWG No.	P16310
Thickness	$\delta = 1.0$	Thickness	$\delta = 1.4$	Thickness	$\delta = 1.0$
T.W.	0.183kg/m	T.W.	1.398kg/m	T.W.	0.228kg/m
		* Matching Angle Is JNPK65B119.		* Assembled For GRP55130C, Glazed For 26mm.	
Application	Bead For Frame	Application	Bead For Sash	Application	Bead For Frame
DWG No.	JNPK55172	DWG No.	JNPK55206	DWG No.	JNPK55210
Thickness	$\delta = 1.0$	Thickness	$\delta = 1.0$	Thickness	$\delta = 1.0$
T.W.	0.254kg/m	T.W.	0.194kg/m	T.W.	0.245kg/m
* Assembled For GRP55086C, Glazed For 26mm.		* Assembled For GRP55130C, Glazed For 26mm.		* Assembled For GRP55086C, Glazed For 26mm.	



GRPK55 Series Insulated Energy-saving Outward Casement Window

GUANG YA

Application	Angle	Application	Bead For Frame	Application	Angle
DWG No.	5015	DWG No.	JNPK55209	DWG No.	JNPK65B119
Thickness	-----	Thickness	$\delta = 1.0$	Thickness	$\delta = 3.0$
T.W.	2.226kg/m	T.W.	0.219kg/m	T.W.	2.572kg/m
		<p>* Assembled For GRPK55086C, Glazed For 26mm.</p>			